

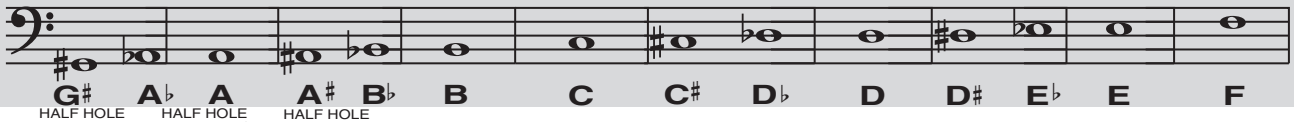
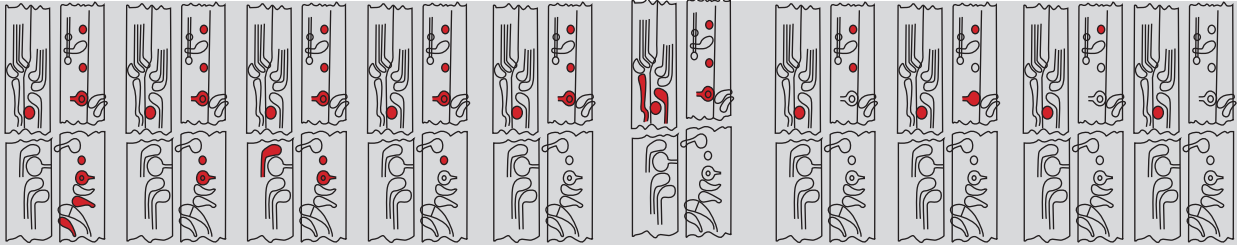
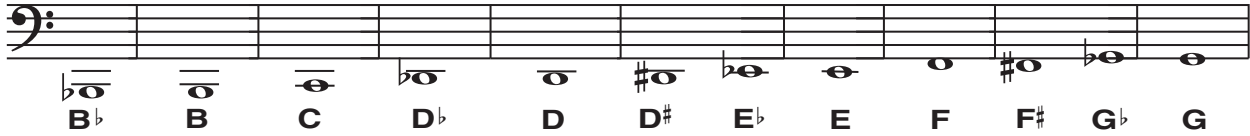
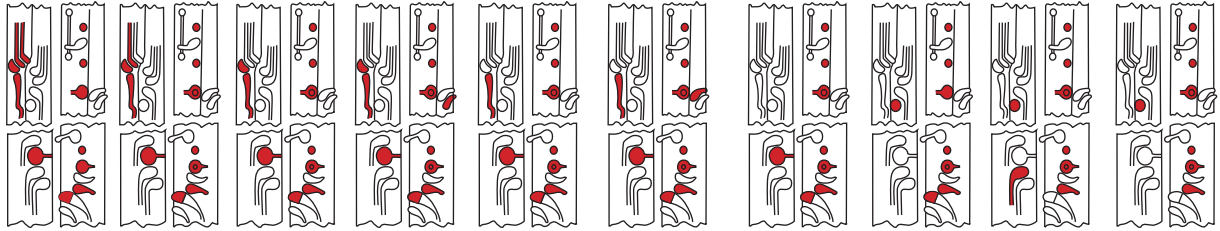
BASIC FINGERING CHART

BASSOON

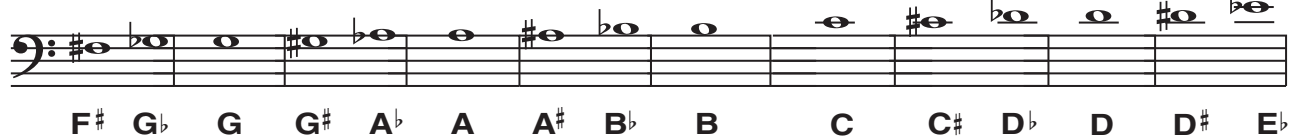
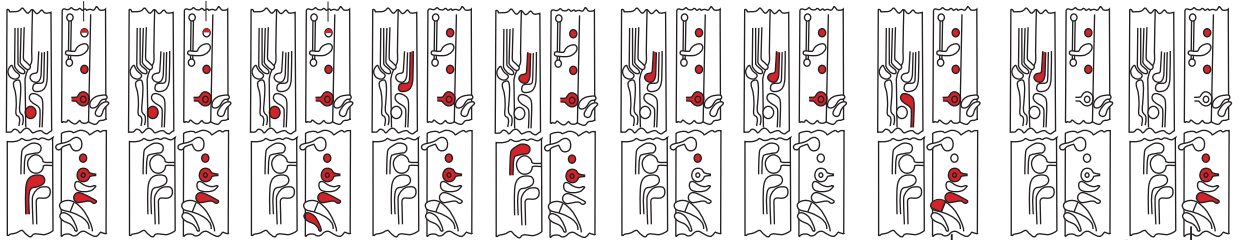
CONN-SELMER, INC.

www.conn-selmer.com

To finger a particular note, depress the keys or levers or cover the holes filled in red.
 The third finger of the right hand depresses the large G lever.
 The contrabassoon sounds one octave below the written notes.
 Uncolored: indicates either a "hole" or a key left untouched.

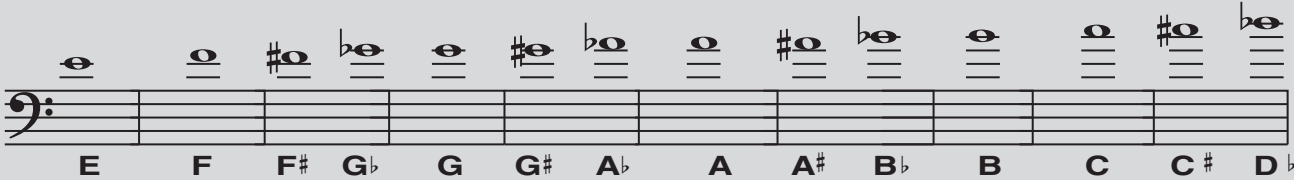
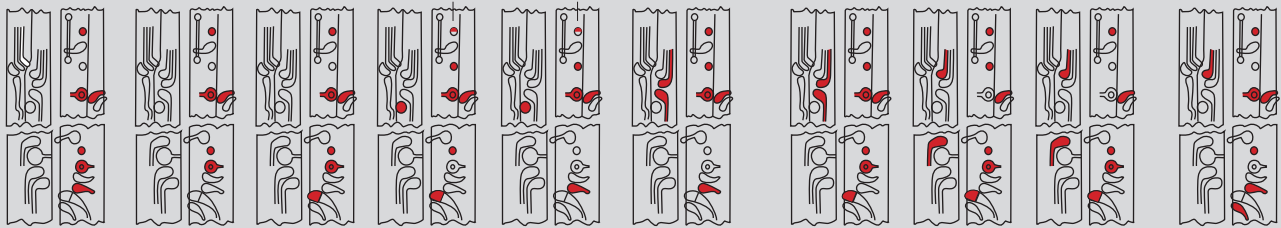


HALF HOLE HALF HOLE HALF HOLE



F# Gb G G# Ab A A# B B C C# Db D D# Eb

HALF HOLE HALF HOLE



E F F# Gb G G# Ab A A# Bb B C C# D